

# CONTAINER+

Your Number **ONE** Shipping Partner to monitor your reefer cargo.



## What is CONTAINER+?

ONE's Cutting-Edge Reefer Monitoring System solution.

Transparency and full data visibility from inside your container directly to your screen, **anytime and anywhere.**

ONE's advanced product, offering **dashboards with near real-time monitoring and key data to empower you and your business.**



## What does CONTAINER+ do?



Monitors the Supply/Return Air



Provides Humidity Levels



Tracks the Ambient Temperature



Shows Power Status



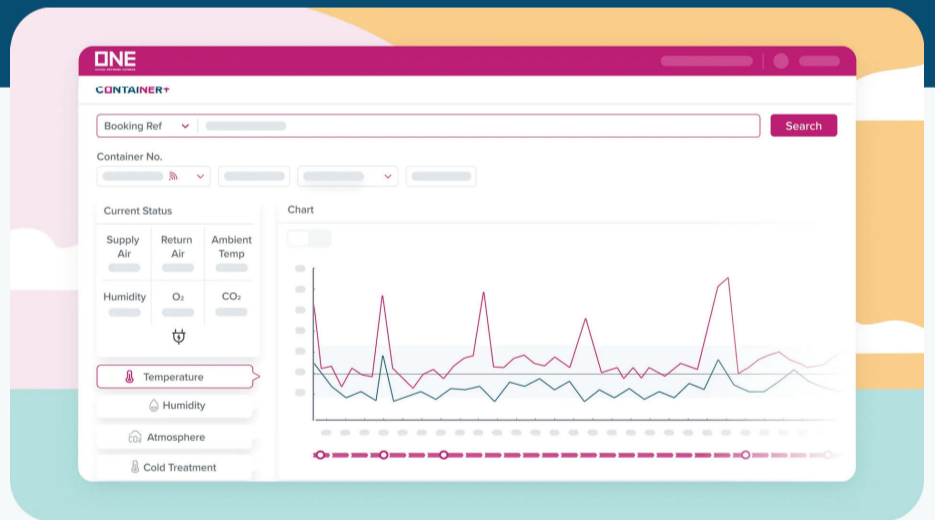
Records hourly data which automatically uploads to the dashboard when within GSM network range

## CO<sub>2</sub>

O<sub>2</sub>/CO<sub>2</sub> (Control Atmosphere) / USDA\* Probes (Cold Treatment)

\*United States Department of Agriculture

## How CONTAINER+ Benefits you?



### Enhanced Visibility

- A single **dashboard** to view all data, reliable, detailed and user friendly. Near real time data updated hourly
- **Data as charts visualization** on the ONE eCommerce platform
- **Detailed cargo condition** information upon request, such as cold treatment data for customs clearance
- **In-transit container conditions** visibility-temperature, atmosphere (O<sub>2</sub>, CO<sub>2</sub>), and humidity tracking
- **Container movement** tracking with precision

### Proactive Decision Making

- Easy access and data charts and logs **downloads in Excel or PDF format**
- **Monitor cargo quality** to minimize losses and optimize dynamic routing
- **Quickly** identify and address supply chain issues

### Excellence in Customer Service

- **24/7 support** from ONE's professional team of experts

We're glad that you're interested in CONTAINER+ for your reefer shipment monitoring. **Here's how to get started:**

Contact ONE Sales and Support team ([containerplus.support@one-line.com](mailto:containerplus.support@one-line.com)) or connect to ONE Chat for more information.



FAQ  
CONTAINER+

ONE  
OCEAN NETWORK EXPRESS